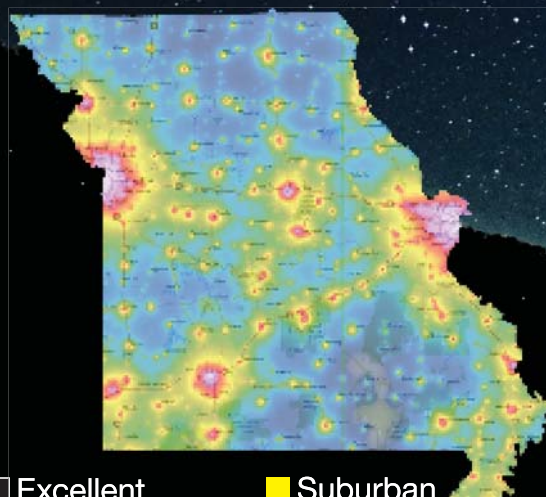


VIEWING THE MILKY WAY IN MISSOURI

While Missouri offers neither the pristine dark skies our ancestors saw, nor the darkest skies still visible in some parts of the United States today, there are still locations in our state where we can see the Milky Way. All we need is good weather, a little planning, and knowing where to look. The Milky Way galaxy is visible year-round, but appears brightest in the summer, when its spectacular center moves directly overhead. The best time to see the galaxy is starting 90 minutes after sunset. Try to choose a moonless night, as any extra light, even the moon's glow, can diminish visibility of the sky's starry brilliance. This color-coded map shows you where you can find the best dark sky viewing areas.

For more tips on viewing the Milky Way in Missouri, visit DarkSkyMissouri.org/MilkyWay



- | | |
|-----------------------------|-----------------------------|
| ■ Excellent | ■ Suburban |
| ■ Average | ■ Suburban/urban transition |
| ■ Rural | ■ Urban |
| ■ Rural/suburban transition | ■ Urban core |



INTERNATIONAL DARK-SKY ASSOCIATION
MISSOURI CHAPTER

MISSOURI DARK SKY DESTINATIONS

Find the darkest state parks in Missouri to view the night sky



INTERNATIONAL DARK-SKY ASSOCIATION
MISSOURI CHAPTER

IDA Missouri is an official chapter of the International Dark-Sky Association focusing on the state of Missouri.

WEBSITE: DARKSKYMISSOURI.ORG
SOCIAL MEDIA: @DARKSKYMISSOURI

A product of the Missouri Chapter of the International Dark-Sky Association.

The International Dark-Sky Association is a global organization dedicated to protecting the night from light pollution.



INTERNATIONAL
DARK-SKY
ASSOCIATION
DARKSKY.ORG

MISSOURI STATE PARKS

Missouri State Parks and Historic Sites are administered by the Division of State Parks, which is a part of the Missouri Department of Natural Resources. Its main responsibilities are the administration of the Missouri State Parks System, and coordination of statewide programs in the areas of outdoor recreation and trails.

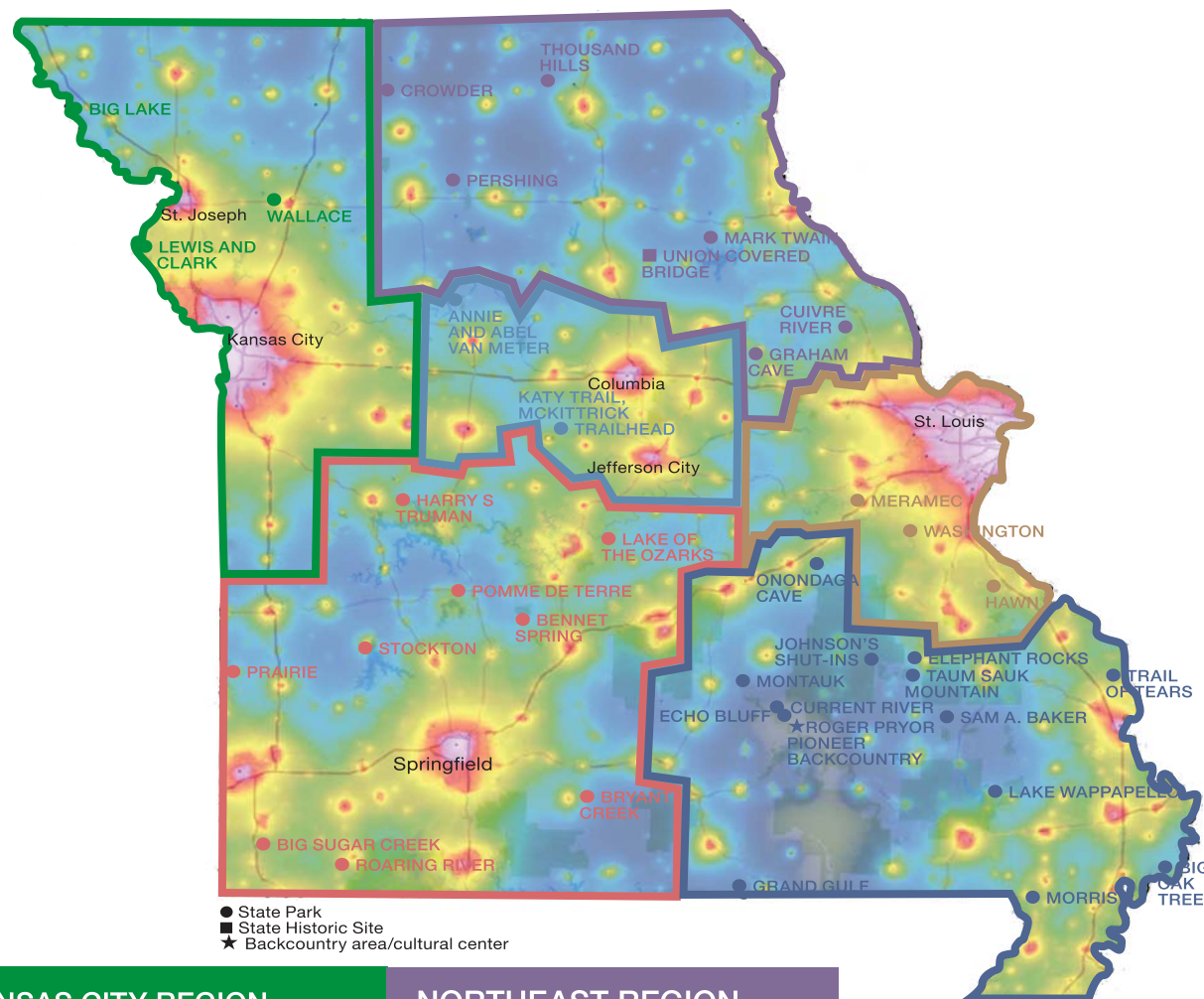
The mission of the State Parks System is to preserve and interpret the state's most outstanding natural landscapes and cultural landmarks, and to provide outstanding recreational opportunities compatible with those resources.

Website: www.mostateparks.com

DARK SKY DESTINATION STATE PARKS

Missouri State Parks can be located by region at MoStateParks.com. Dark Sky Destination State Parks—where less light encroachment affords better night sky viewing—are shown on this map. While most state parks close to daytime visitors at sunset, special night sky viewing permission can be arranged by contacting park authorities. Many state parks offer overnight camping trips or lodging. You'll be enchanted by what you can see when you look up into Missouri's darkest night skies.

MISSOURI STATE PARKS AND DARK SKY DESTINATIONS



KANSAS CITY REGION

Big Lake
Wallace
Lewis and Clark

CENTRAL REGION

Annie and Abel Van Meter
Katy Trail, McKittrick Trailhead

LAKES REGION

Bryant Creek
Stockton
Prairie
Harry S Truman
Roaring River
Pomme de Terre
Big Sugar Creek
Bennett Spring
Lake of the Ozarks

NORTHEAST REGION

Mark Twain
Union Covered Bridge
Pershing
Graham Cave
Crowder
Long Branch
Wakonda
Thousand Hills
Cuivre River

ST. LOUIS REGION

Hawn
Washington
Meramec

NOT SHOWN ON MAP

Mark Twain National Forest
Ozark National Scenic
Riverways National Park

SOUTHEAST REGION

Current River
Echo Bluff
Roger Pryor Pioneer
Backcountry
Montauk
Sam A. Baker
Johnson's Shut-Ins
Grand Gulf
Taum Sauk Mountain
Big Oak Tree
Lake Wappapello
Onondaga Cave
Elephant Rocks
Morris
Trail of Tears